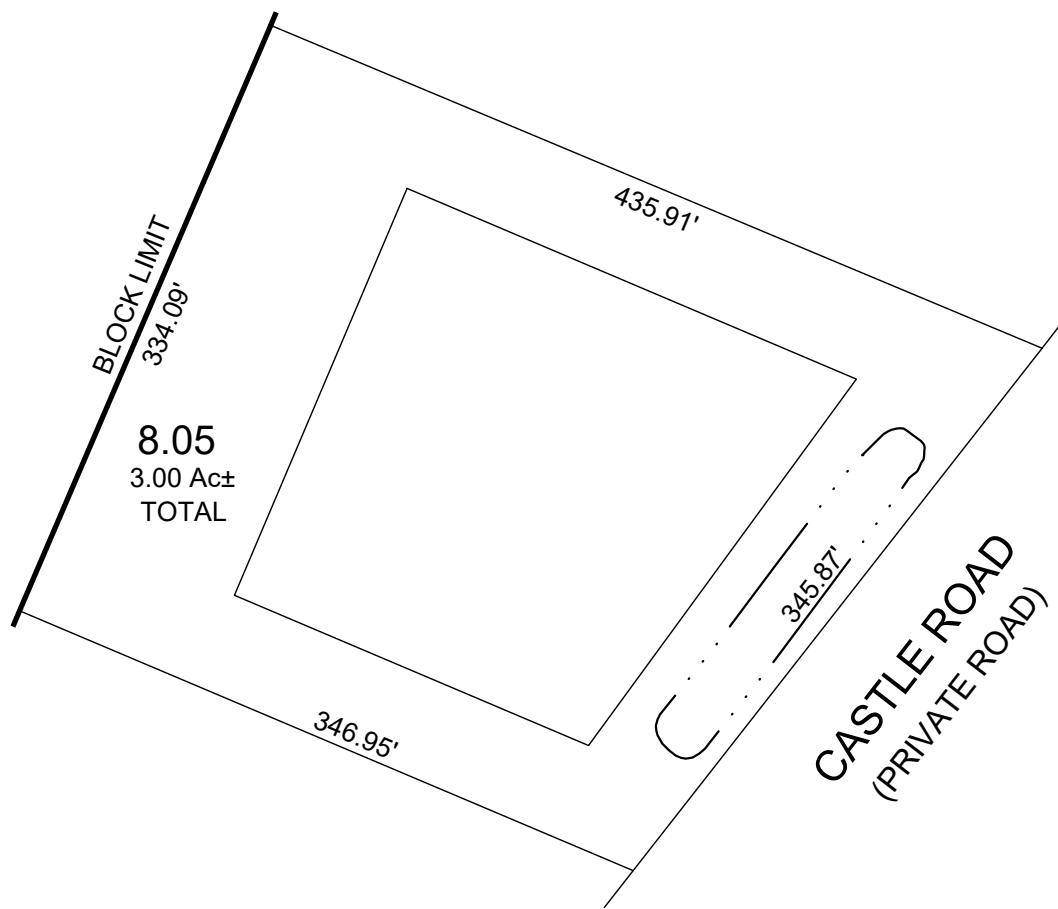


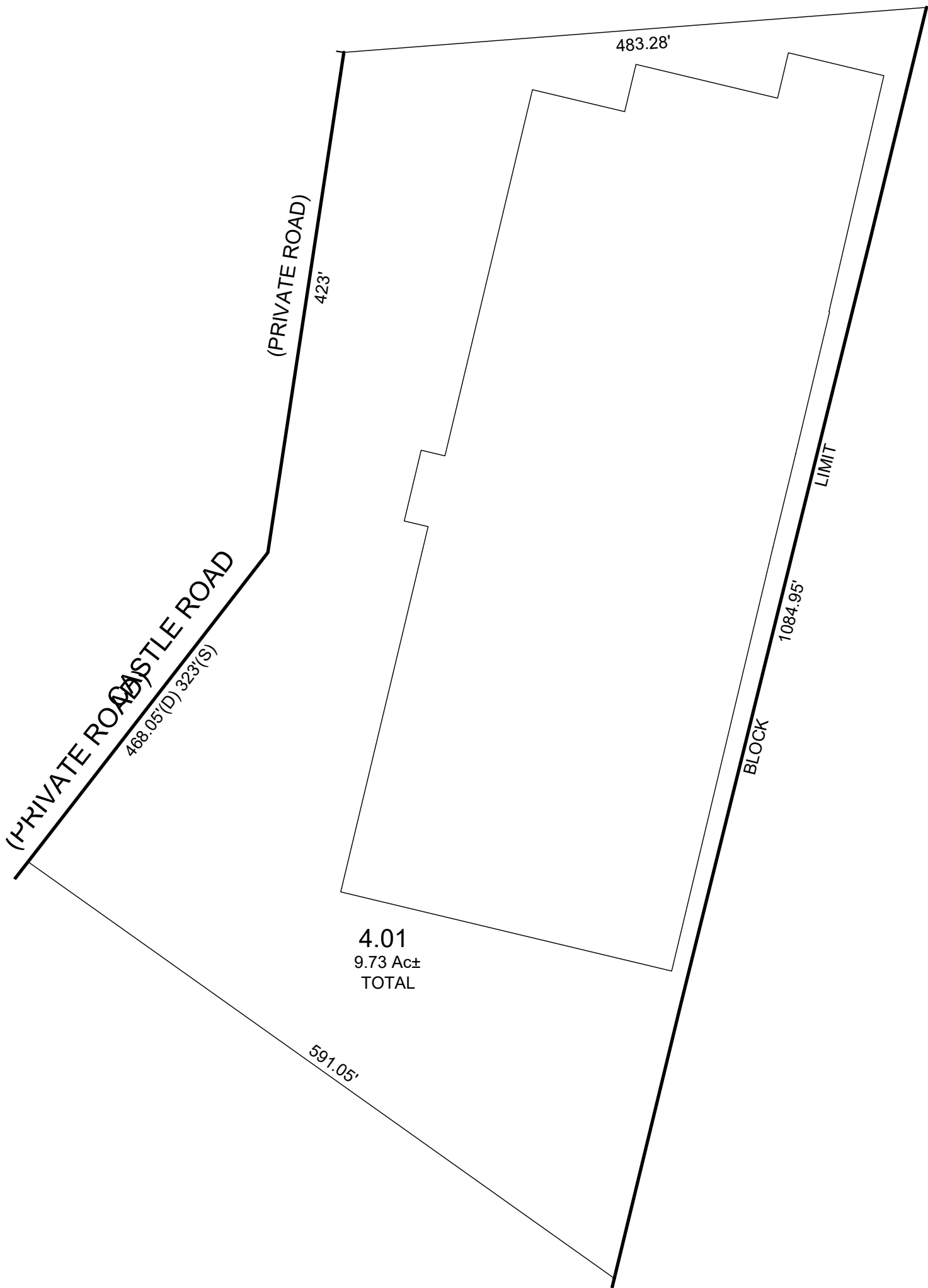
COMMERCIAL CONDOMINIUM AT CASTLE ROAD
BLOCK 9 - LOT 8.05



SCALE: 1" = 100'
3.00 Ac± TOTAL

| QUAL | FLOOR | UNIT | SQ_FT |
|-------|-------|------|-------|
| C0001 | 1 | 1 | 19689 |
| C0002 | 1 | 2 | 20575 |
| C0003 | 1 | 3 | 19151 |

MEADOWLANDS WAREHOUSE CONDOMINIUMS
BLOCK 10 - LOT 4.01



SCALE: 1" = 100'
9.73 Ac± TOTAL

| QUAL | FLOOR | UNIT | SQ_FT |
|-------|-------|------|--------|
| C0001 | 1-2 | A | 104092 |
| C0002 | 1-2 | B | 102456 |

* THIS SHEET HAS BEEN DRAWN USING COMPUTER AIDED DRAFTING/
DESIGN (CAD/D) AND COORDINATE GEOMETRY (COGO).

| REVISIONS | | | | |
|-----------|----|--------|-------|-----|
| DATE | BY | LIC.NO | BLOCK | LOT |
| | | | | |
| | | | | |
| | | | | |
| | | | | |
| | | | | |
| | | | | |
| | | | | |

THIS MAP HAS BEEN GIVEN
A FORMAL CERTIFICATION
BY THE DIVISION OF TAXATION
ON FEBRUARY 1, 2022, SIGNED
BY JESSICA LARNED AND
LATOYA ROBERTSON AND
ASSIGNED SERIAL NUMBER 1127

TAX MAP
TOWN OF SECAUCUS

HUDSON COUNTY
SCALE: AS NOTED

NEW JERSEY
DATE: JUNE 2021

ED CLAY

LICENSED LAND SURVEYOR
NEW JERSEY LICENSE NO. 34842
215 BELLEVUE AVENUE
HAMMONTON, NEW JERSEY 08037
CO.# 24GA27973300

TO SHOW CONDITIONS AS OF JULY 2021