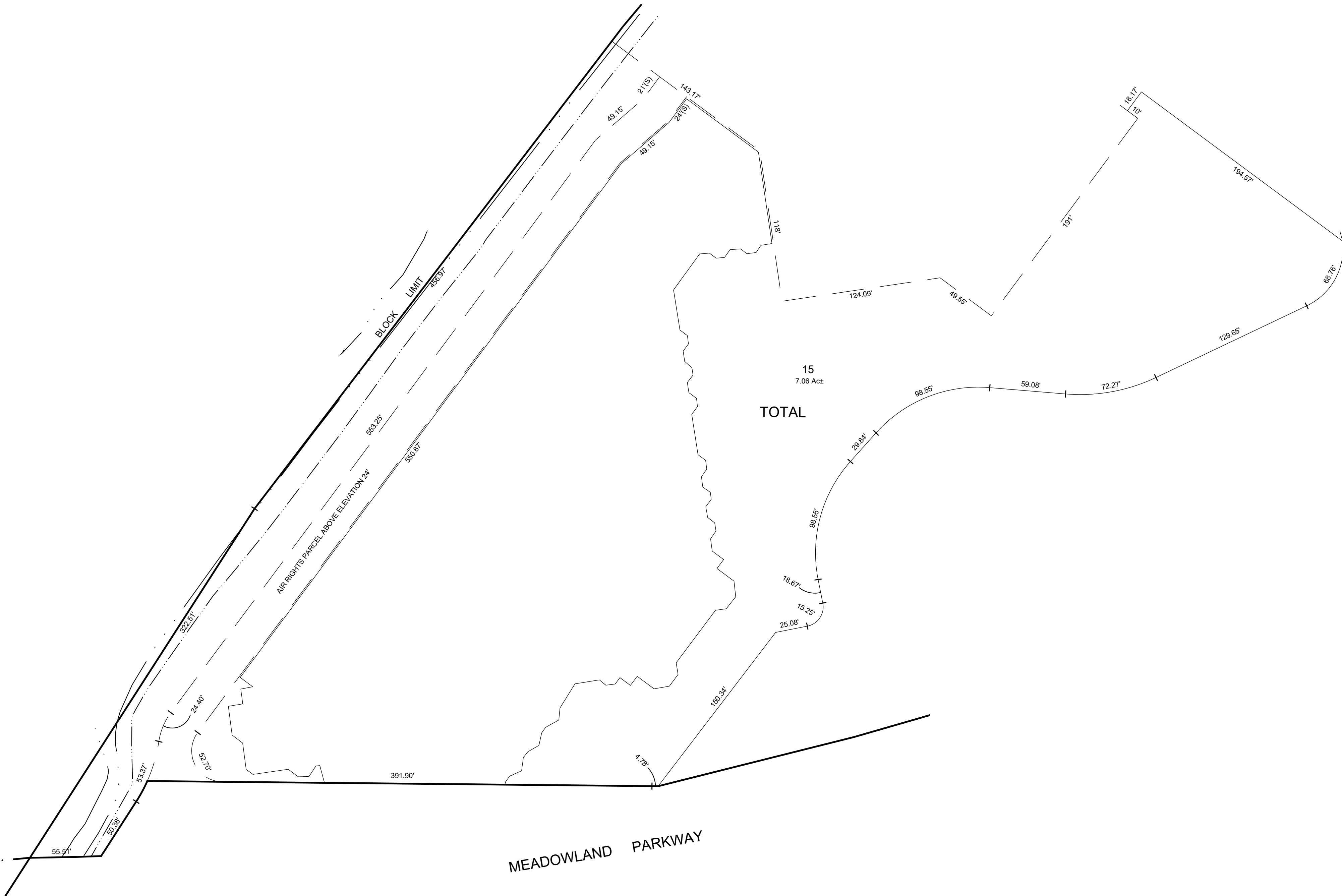
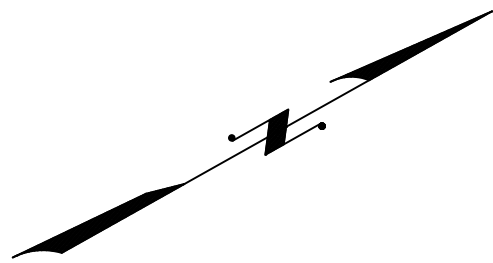


HARMON COVE TOWERS I
CONDOMINIUMS
BLOCK 21 - LOT 15



* THIS SHEET HAS BEEN DRAWN USING COMPUTER AIDED DRAFTING/
DESIGN (CAD/D) AND COORDINATE GEOMETRY (COGO).

REVISIONS				
DATE	BY	LIC.NO	BLOCK	LOT

THIS MAP HAS BEEN GIVEN
A FORMAL CERTIFICATION
BY THE DIVISION OF TAXATION
ON FEBRUARY 1, 2022, SIGNED
BY JESSICA LARNED AND
LATOYA ROBERTSON AND
ASSIGNED SERIAL NUMBER 1127

**TAX MAP
TOWN OF SECAUCUS**

HUDSON COUNTY
SCALE: 1" = 50'

ED CLAY
LICENSED LAND SURVEYOR
NEW JERSEY LICENSE NO. 34842
215 BELLEVUE AVENUE
HAMMONTON, NEW JERSEY 08037
CO.# 24GA27973300

NEW JERSEY
DATE: JUNE 2021

TO SHOW CONDITIONS AS OF JULY 2021