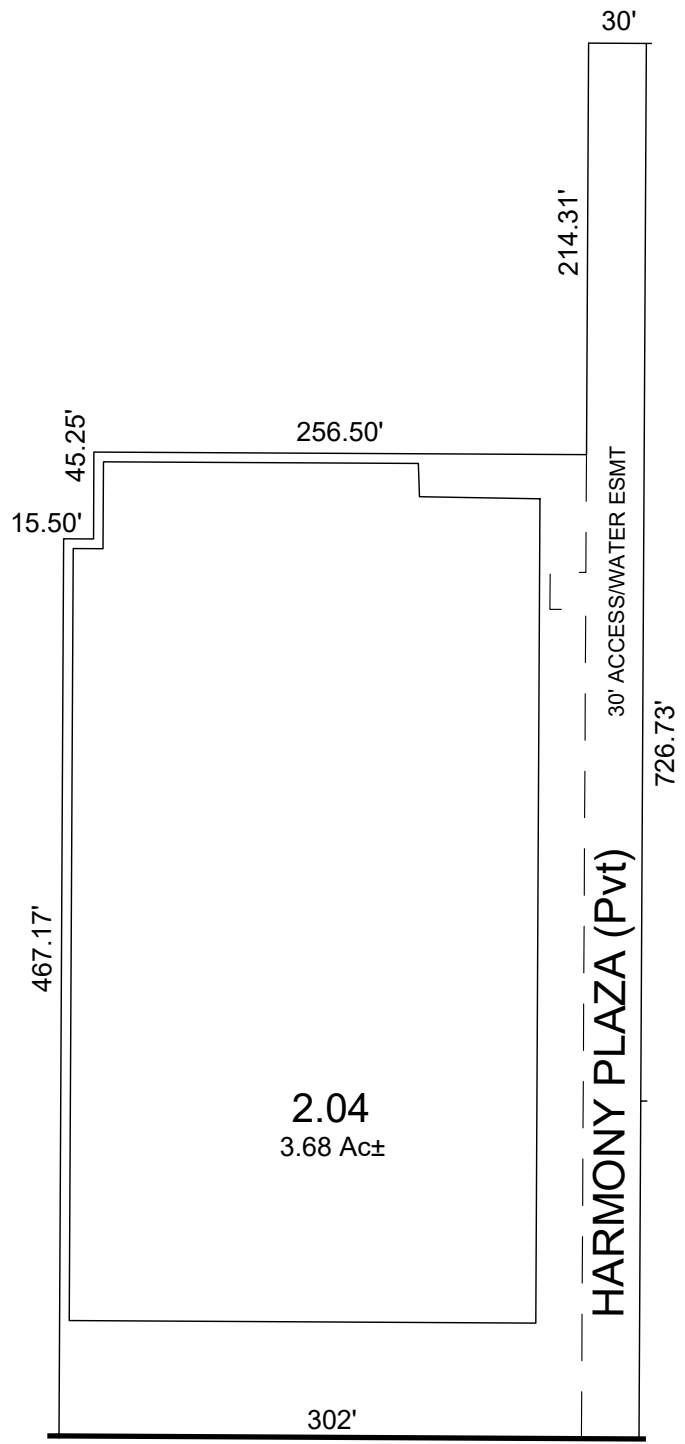


HARMON PLAZA CONDOMINIUMS
BLOCK 21 - LOT 2.04



SCALE: 1" = 40'
0.46 Ac± TOTAL

QUAL	FLOOR	UNIT	SQ_FT
C0001		EXB	13832
C0002	1ST	1	90939
C0003	2ND	2	103351
C0004	3RD	3	103351

* THIS SHEET HAS BEEN DRAWN USING COMPUTER AIDED DRAFTING/
DESIGN (CAD/D) AND COORDINATE GEOMETRY (COGO).

REVISIONS				
DATE	BY	LIC.NO	BLOCK	LOT

THIS MAP HAS BEEN GIVEN
A FORMAL CERTIFICATION
BY THE DIVISION OF TAXATION
ON FEBRUARY 1, 2022, SIGNED
BY JESSICA LARNED AND
LATOYA ROBERTSON AND
ASSIGNED SERIAL NUMBER 1127

TAX MAP
TOWN OF SECAUCUS

HUDSON COUNTY
SCALE: AS NOTED

NEW JERSEY
DATE: JUNE 2021

ED CLAY

LICENSED LAND SURVEYOR
NEW JERSEY LICENSE NO. 34842
215 BELLEVUE AVENUE
HAMMONTON, NEW JERSEY 08037
COA# 24GA27973300

TO SHOW CONDITIONS AS OF JULY 2021