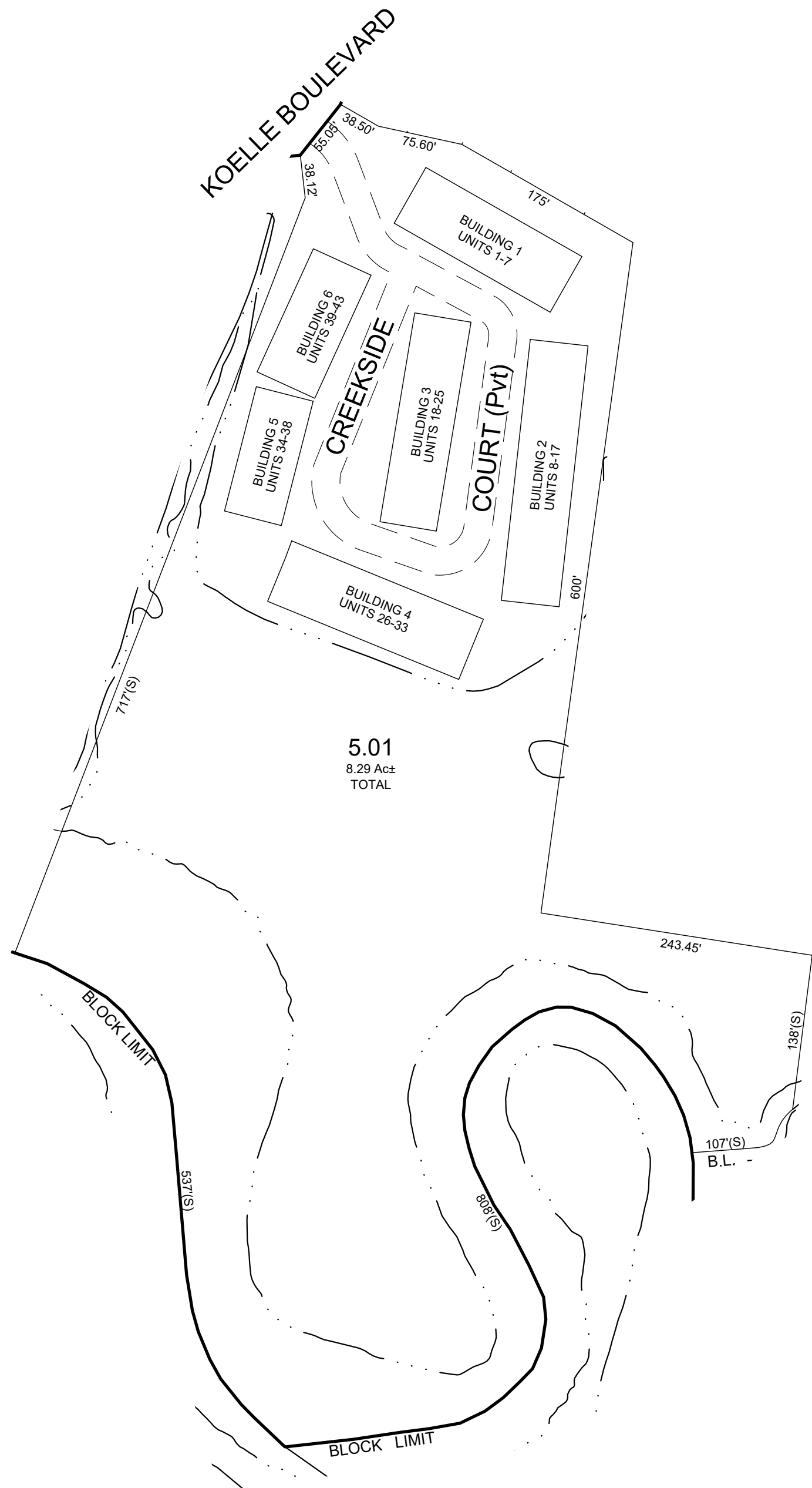


CITYHOMES AT CREEKSIDE MANOR  
CONDOMINIUMS  
BLOCK 225 - LOT 5.01



SCALE: 1" = 100'  
8.29 Ac± TOTAL

QUAL	UNIT	FLOOR	SQ. FT
C0001	1	1-3	2691
C0002	2	1-3	2369
C0003	3	1-3	2369
C0004	4	1-3	2369
C0005	5	1-3	2369
C0006	6	1-3	2369
C0007	7	1-3	2691
C0008	8	1-3	2691
C0009	9	1-3	2369
C0010	10	1-3	2369
C0011	11	1-3	2369
C0012	12	1-3	2369
C0013	13	1-3	2369
C0014	14	1-3	2369
C0015	15	1-3	2369
C0016	16	1-3	2369
C0017	17	1-3	2691
C0018	18	1-3	2369
C0019	19	1-3	2369
C0020	20	1-3	2369
C0021	21	1-3	2369
C0022	22	1-3	2369
C0023	23	1-3	2369
C0024	24	1-3	2369
C0025	25	1-3	2691
C0026	26	1-3	2691
C0027	27	1-3	2369
C0028	28	1-3	2369
C0029	29	1-3	2369
C0030	30	1-3	2369
C0031	31	1-3	2369
C0032	32	1-3	2369
C0033	33	1-3	2691
C0034	34	1-3	2691
C0035	35	1-3	2369
C0036	36	1-3	2369
C0037	37	1-3	2369
C0038	38	1-3	2691
C0039	39	1-3	2691
C0040	40	1-3	2369
C0041	41	1-3	2369
C0042	42	1-3	2369
C0043	43	1-3	2369

\* THIS SHEET HAS BEEN DRAWN USING COMPUTER AIDED DRAFTING/  
DESIGN (CAD/D) AND COORDINATE GEOMETRY (COGO).

REVISIONS				
DATE	BY	LIC.NO	BLOCK	LOT

THIS MAP HAS BEEN GIVEN  
A FORMAL CERTIFICATION  
BY THE DIVISION OF TAXATION  
ON FEBRUARY 1, 2022, SIGNED  
BY JESSICA LARNED AND  
LATOYA ROBERTSON AND  
ASSIGNED SERIAL NUMBER 1127

TAX MAP  
TOWN OF SECAUCUS

HUDSON COUNTY  
SCALE: AS NOTED

NEW JERSEY  
DATE: JUNE 2021

ED CLAY

LICENSED LAND SURVEYOR  
NEW JERSEY LICENSE NO. 34842  
215 BELLEVUE AVENUE  
HAMMONTON, NEW JERSEY 08037  
CO.# 24GA27973300

TO SHOW CONDITIONS AS OF JULY 2021