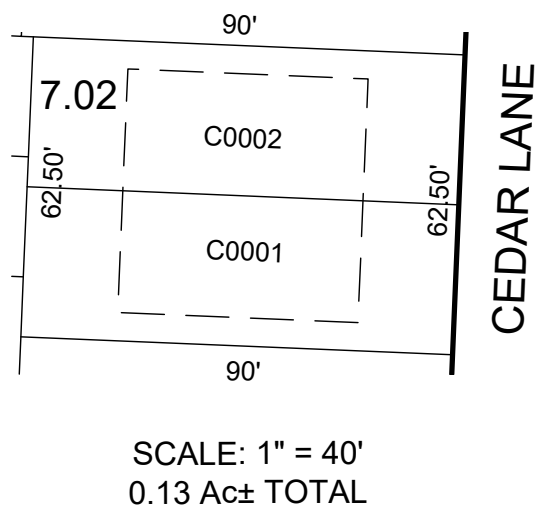
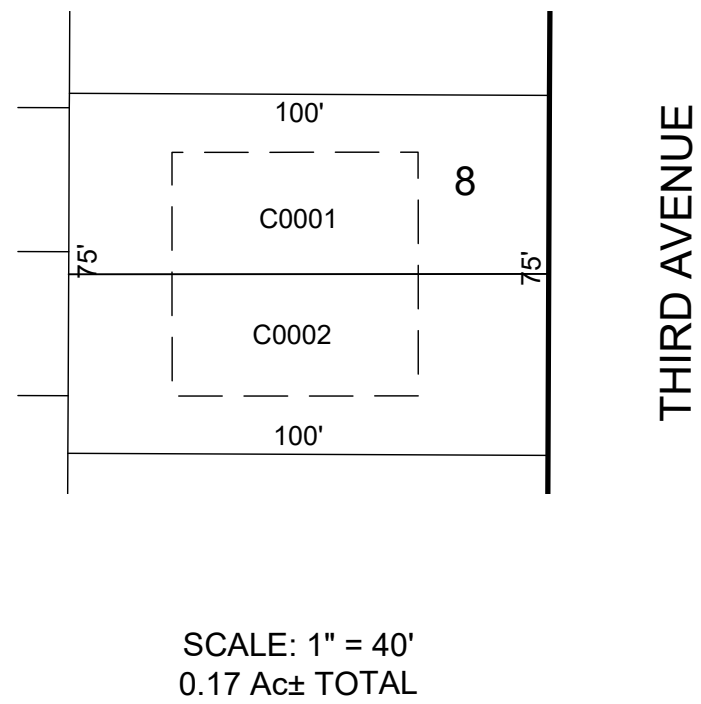


115 CEDAR LANE CONDOMINIUMS  
BLOCK 149 - LOT 7.02



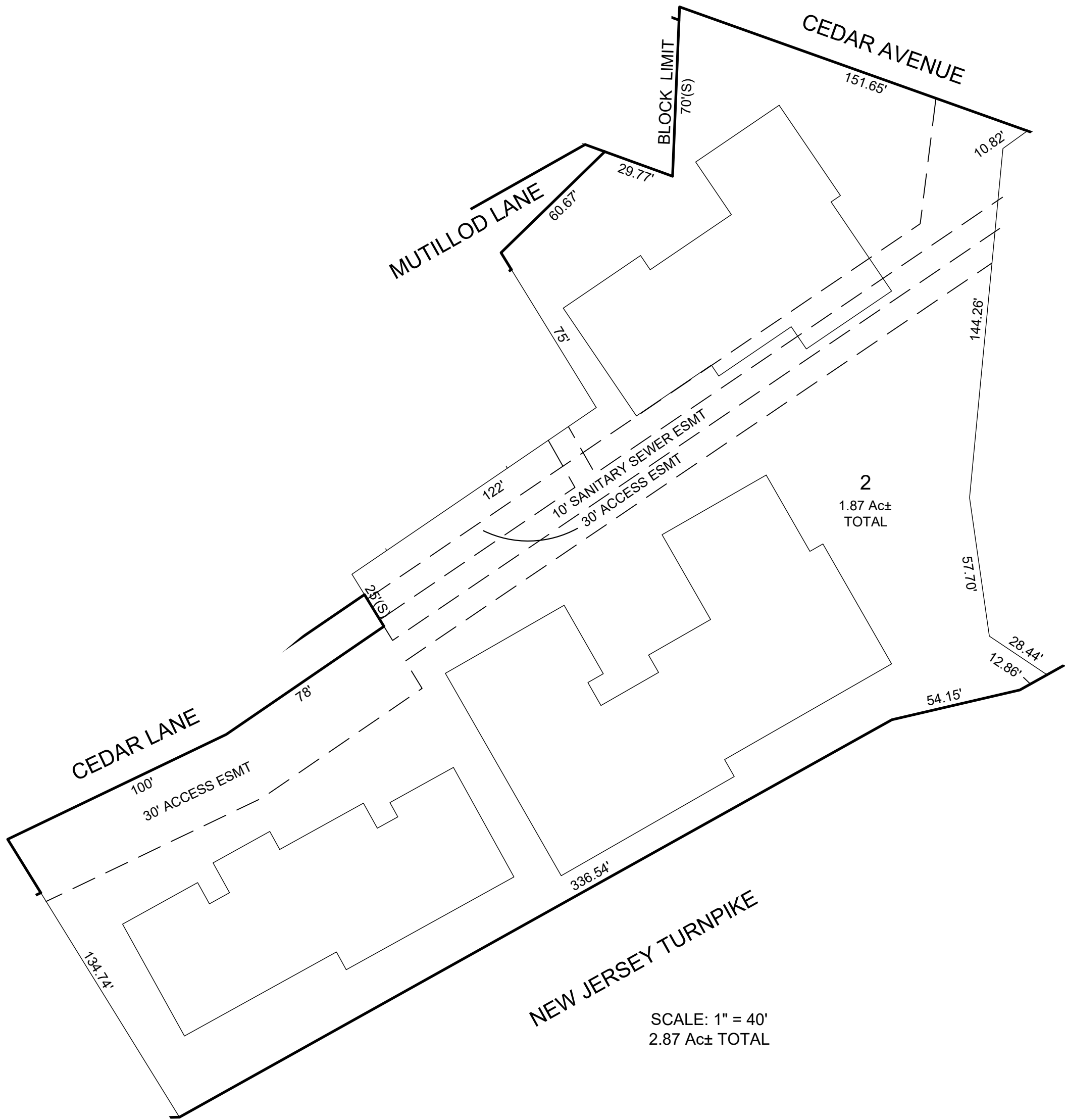
QUAL	FLOOR	SQ_FT
C0001	3 FLS	3149
C0002	3 FLS	3149

63 THIRD AVENUE CONDOMINIUMS  
BLOCK 151- LOT 8



QUAL	FLOOR	UNIT	SQ_FT
C0001	1-2	A	3168
C0002	1-2	B	3168

GREEN VALLEY GARDENS CONDOMINIUMS  
BLOCK 154 - LOT 2



QUAL	FLOOR	SQ_FT
C0001	1	1429
C0002	2	1429
C0003	3	1429
C0004	1	1429
C0005	2	1429
C0006	3	1429
C0007	1	1429
C0008	2	1429
C0009	3	1429
C0010	1	1429
C0011	2	1429
C0012	3	1429
C0013	1	1429
C0014	2	1429
C0015	3	1285
C0016	1	1302
C0017	2	1302
C0018	3	1302
C0019	1	1295
C0020	2	1295
C0021	3	1295
C0022	1	1295
C0023	2	1295
C0024	3	1295
C0025	1	1285
C0026	2	1285
C0027	3	1285
C0028	1	1302
C0029	2	1302
C0030	3	1302
C0031	1	1295
C0032	2	1295
C0033	3	1295
C0034	1	1295
C0035	2	1295
C0036	3	1295
C0037	1	1287
C0038	2	1287
C0039	3	1287
C0040	1	1287
C0041	2	1287
C0042	3	1287

\* THIS SHEET HAS BEEN DRAWN USING COMPUTER AIDED DRAFTING/  
DESIGN (CAD/D) AND COORDINATE GEOMETRY (COCO).

REVISIONS				
DATE	BY	LIC.NO	BLOCK	LOT

THIS MAP HAS BEEN GIVEN  
A FORMAL CERTIFICATION  
BY THE DIVISION OF TAXATION  
ON FEBRUARY 1, 2022, SIGNED  
BY JESSICA LARNED AND  
LATOYA ROBERTSON AND  
ASSIGNED SERIAL NUMBER 1127

TAX MAP  
TOWN OF SECAUCUS

HUDSON COUNTY  
SCALE: AS NOTED

NEW JERSEY  
DATE: JUNE 2021

ED CLAY

LICENSED LAND SURVEYOR  
NEW JERSEY LICENSE NO. 34842  
215 BELLEVUE AVENUE  
HAMMONTON, NEW JERSEY 08037  
CDA# 24GA27973300

TO SHOW CONDITIONS AS OF JULY 2021